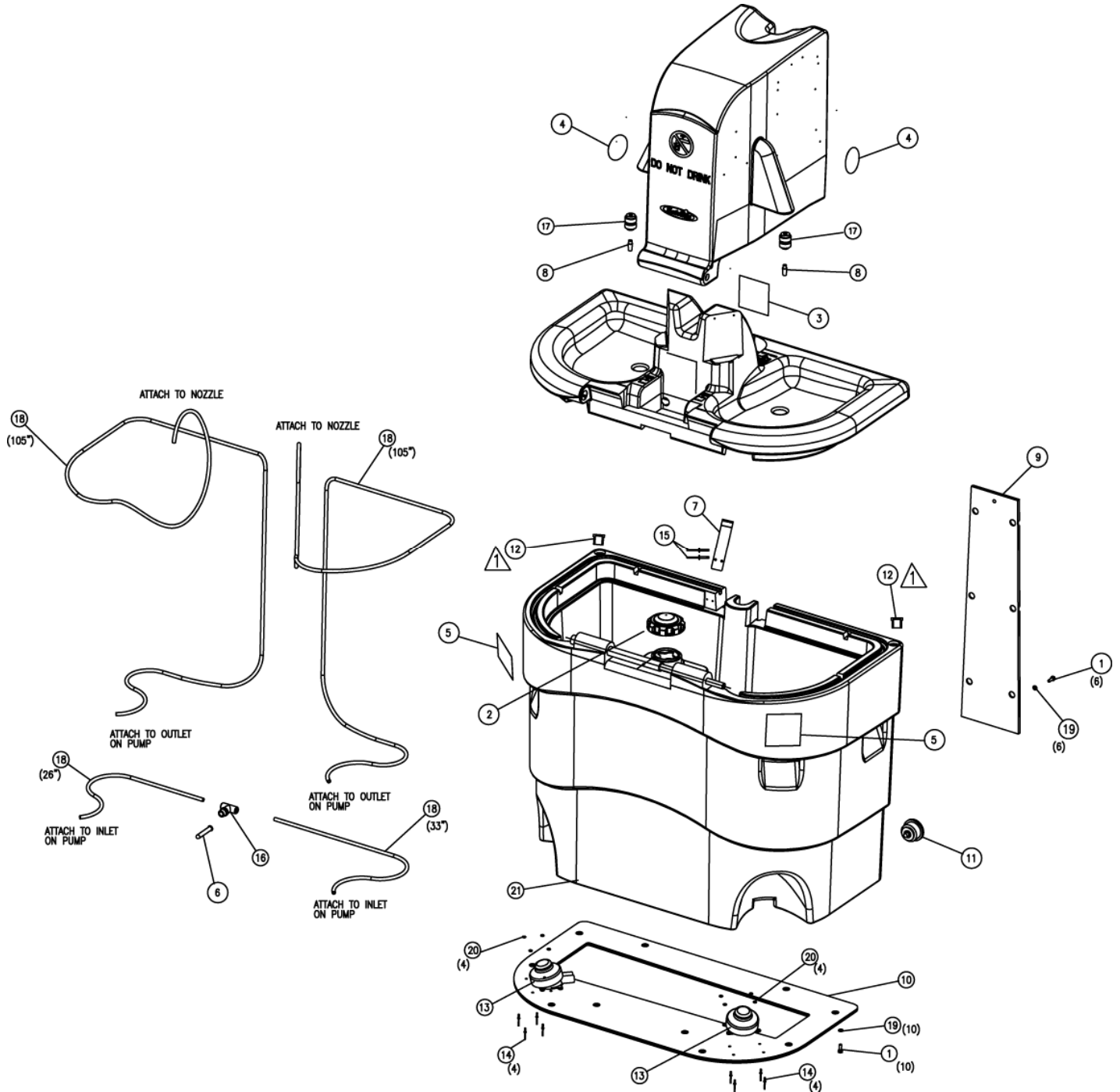


WAVE II™ MAJOR ASSEMBLY

18378



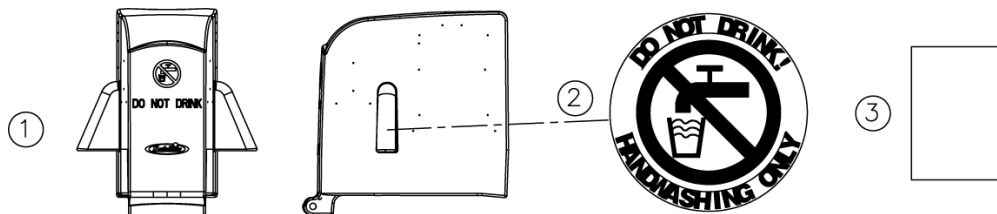
Visa / Mastercard / American Express / Discover
 \$25.00 Minimum Order — Prices and quantities subject to change / all prices are FOB FACTORY — Priced in U.S. Dollars
 20% minimum restocking charge applies on returns

WAVE II™ MAJOR ASSEMBLY

REV C ITEM #	PART#	QTY PER UNIT	DESCRIPTION	PRICE EACH
	18378	1	THE WAVE II	
		1	THE WAVE, COVER/DECK/TANK SET	NOT SALEABLE
1	16814	16	BOLT- ¼-20 X ¾ STNLS	
2	18344	1	CAP- 3-1/2in W/VENT	
3	18242	1	DECAL- BREEZE/WAVE PROCEDURE	
4	13776	2	DECAL- DO NOT DRINK	
5	17463	2	DECAL- WAVE/BREEZE PUMP INSTR	
6	16829	1	FILTER- ½ X 3-1/2 CYLINDER	
7	16818	1	LATCH- THE WAVE	
8	16819	2	NOZZLE- THE WAVE	
9	16820	1	PLATE- THE WAVE BACK	
10	16821	1	PLATE- THE WAVE BOTTOM	
11	17458	1	PLUG- 2in RUBBER HOLE	
12	14203	2	PLUG- ½ HEX HEAD PLSTC PIPE	
13	16305	2	PUMP- BABY FOOT 3/8 HOSE INS	
14*	11024	8	RIVET- #610 AAP	
15*	14427	2	RIVET- #66 LSH W/LOCK MANDREL	
16	16824	1	TS FITTING- 3/8 HOS X MPT TEE	
17	16823	2	TS FITTING- 3/8 HOS X BULKHEAD	
18	16304	269"	TS HOSE- 3/8 OD TUBING	
19*	11360	16	WASHER- ¼ ID FENDER STNLS	
20*	11315	8	WASHER- 3/16 RIVET STNLS	
21	18434	1	WAVE II- COVER/DECK/TANK SET	
	20508	1	BOOT – BABY FOOT PUMP	

* ONLY SOLD IN MULTIPLES OF 100

WAVE II™ COVER – NARROW RETRO



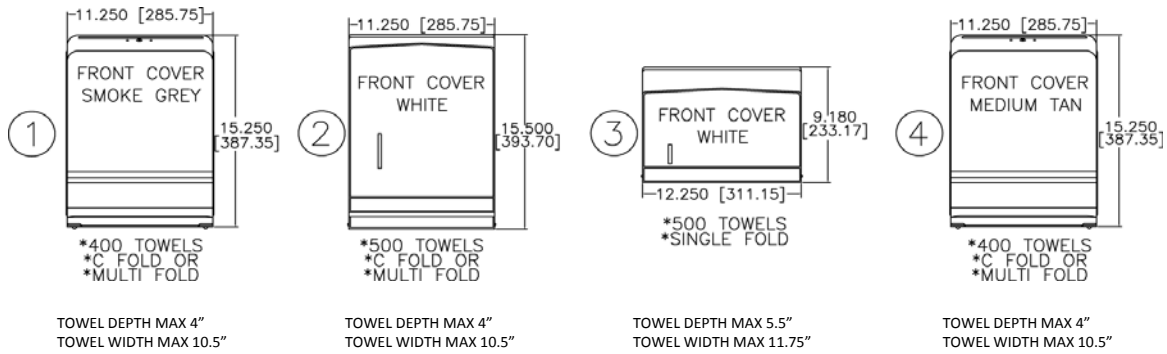
REV B ITEM #	PART#	QTY PER UNIT	DESCRIPTION	PRICE EACH
	18436	1	KIT- WAVE II COVER NARROW RETR	
1	18341	1	COVER, WAVE II NARROW	
2	13776	2	DECAL- DO NOT DRINK	
3	18435	1	INSTRUCTIONS WAVE II COVR/RTO	

Consult Your Area Manager at:

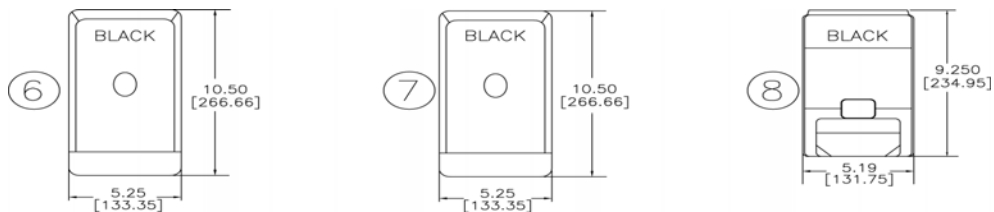
Tel: 1-800-883-1123 (US & Canada) Fax: 1-800-328-3334 (US & Canada)

Web Site: www.satelliteindustries.com

BREEZE™ & WAVE II™ TOWEL DISPENSERS



SOAP & SANITIZER DISPENSERS



ITEM #	PART#	QTY PER UNIT	DESCRIPTION	PRICE EACH
1	17898	2 sink -1 unit	KIT- SMOKE TOWEL DISPENSER (6 PER CASE)	
2	18366	2 sink -1 unit	KIT- DISPENSER MULT/FOLD WHITE (6 PER CASE)	
3	18367	2 sink -1 unit	KIT- DISPENSER SNGL/FOLD WHITE (6 PER CASE)	
4	18998	2 sink -1 unit	KIT- DISPENSER TOWEL MTAN (6 PER CASE)	
	18365	2 sink -1 unit	HDWE, PAPER TOWEL DISPENSER	
6	20893	2 sink -1 unit	KIT- 800ML DISPENSER (EA) BLACK (12 PER CASE)	
7	20894	2 sink -1 unit	KIT- 1000ML DISPENSER (EA) BLACK (12 PER CASE)	
8	20895	2 sink -1 unit	KIT- FOAM DISPENSER (EA) BLACK (15 PER CASE)	

SOAP & SANITIZER FOR DISPENSERS

USE W/ITEM #	PART#	DESCRIPTION
6	19327	REFILL- H.SANIT 800ML 12/C IPK (LIGHT GREEN)
6	19325	REFILL- SOAP 800ML 12/CS IPK (PINK)
7	19328	REFILL- H.SANIT 1000ML 6/C IPK (LIGHT GREEN)
7	19326	REFILL- SOAP 1000ML 10/CS IPK (PINK)
8	18371	REFILL- FOAM SANIT 1L 8/CS (PURPLE)
8	18370	REFILL- FOAM SOAP 1L 6CS (LIGHT BLUE)
8	19009	REFILL- GEL ALCH SANI 1L 8/CS (GREEN)