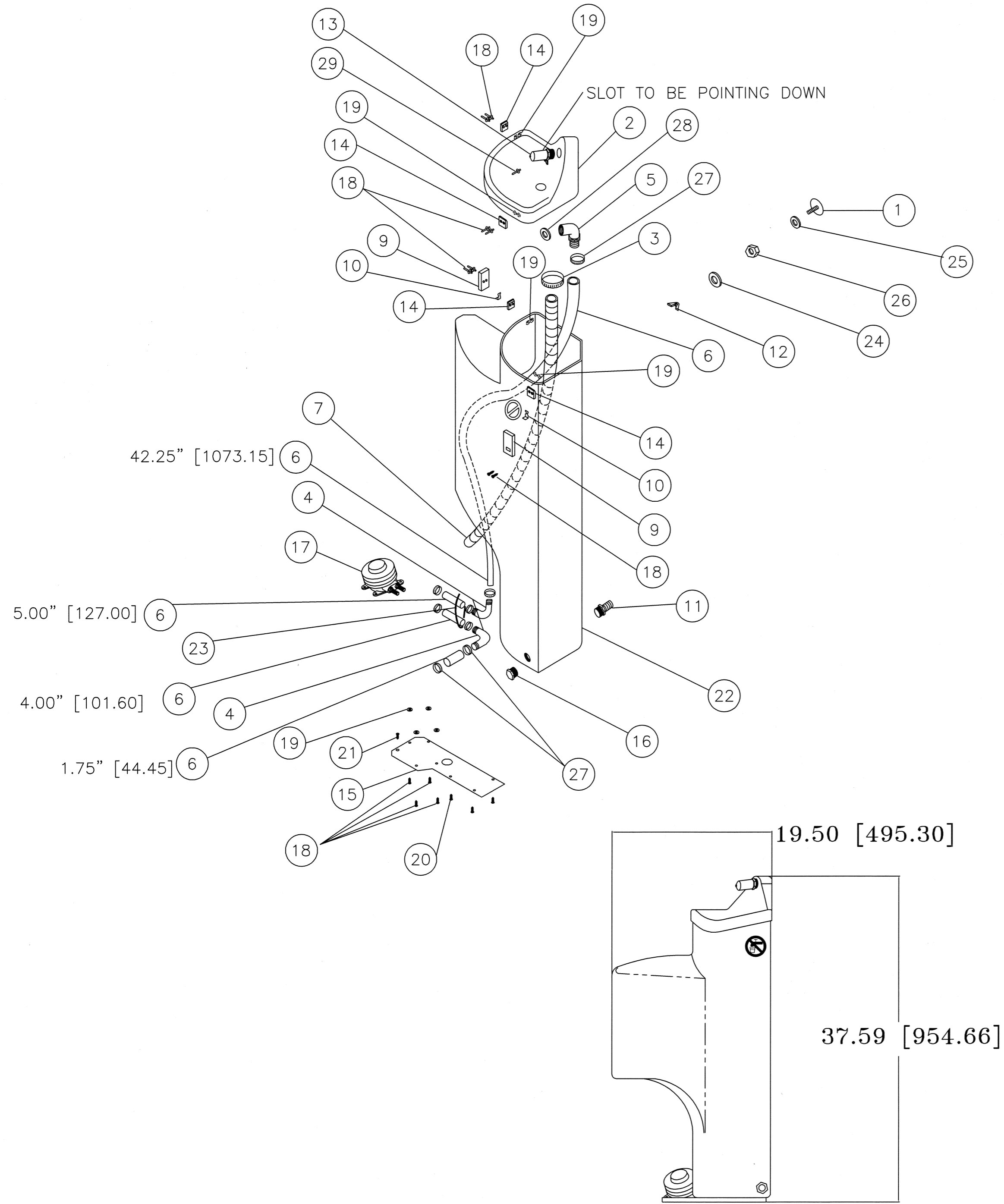


REVISIONS			
REV	DESCRIPTION	DATE	DR
S	ECO# 3109	3-1-12	BCF



1. NOT SHOWN

NOTES:
NOTE: PARTS PLACED IN SEPARATE PLASTIC BAG

1

26	15469	1	NUT, 1/4-20 STNLS
25	11368	1	WASHER, 5/16" FLAT STNLS
24	15340	1	WASHER, 1/4" STAR STNLS
21	13860	1	SCREW, #14 X 1-1/2" W/WSH GOLD
12	13440	1	NUT, 1/4-20 WING TYPE A STNLS
8	14676	1	INSTRUCTIONS, SLIMMATE
1	13439	1	BOLT, 1/4-20 X 1" ELEVTR STNLS

29	11027	1	RIVET, #66 ALUM
28	15774	1	WASHER, 5/8" X 5/16" THK NEOPRN
27	10280	8	CLAMP, WORMDRIVE #6
23	11261	1	TIE, WIRE 6"
22	14564	1	TANK, SLIMMATE GREY
20	21144	3	SCREW, #10-24 X 1/2 PHPN STNLS
19	11384	12	WASHER, 1/8" RIVET STNLS
18	15144	12	RIVET, #410 ALUM
17	14484	1	PUMP, BABY FOOT MKII
16	14203	1	PLUG, 1/2" HEX HEAD PLSTC PIPE
15	14937	1	PLATE, PLASTIC SLIMMATE PUMP
14	14773	4	PLATE, DRAW HINGE LATCH
13	14942	1	OUTLET, SLIMMATE SLOTTED
11	14766	1	NIPPLE, 1/2" KING NYLON
10	14778	2	LOCK, DRAW HINGE LATCH
9	14772	2	LATCH, DRAW HINGE
7	14780	48"	HOSE, 1" LOW PRESSURE
6	12043	53"	HOSE, 1/2" ID
5	15571	1	ELBOW, 90 3/4" FPT X 1/2" INS PE
4	13840	2	ELBOW, 90 1/2" INS X 1/2" INS
3	12588	1	CLAMP, WORMDRIVE #12
2	14563	1	BOWL, SLIMMATE GREY

ITEM #	PART #	QTY	DESCRIPTION
DIMENSIONS ARE IN INCHES [MM]			
TOLERANCES ON:			
2 PL DECIMALS ±			
3 PL DECIMALS ±			
ANGLES ±			
SIGNATURES		DATE	Satellite Industries, Inc. Minneapolis, MN 55441 U.S.A.
DRAWN CEK		6-15-04	
CHECKED BCF		3/1/12	TITLE
ENGRG RM		3-20-12	SLIMMATE, ASSEMBLED
MFG. ENG.			DWG NO
QA. ENG.			14690
THIRD ANGLE PROJECTION			REV
			S
SCALE 1:10		SUPERSEDES:	SHEET 1 OF 1

THIS DRAWING IS THE PROPERTY OF SATELLITE INDUSTRIES, INC. AND CONTAINS ITS TRADE SECRETS AND ITS PROPRIETARY INFORMATION FOR WHICH IT CLAIMS UNPUBLISHED COPYRIGHT MATERIAL PROTECTION UNDER THE COPYRIGHT ACT OF 1976. THIS DRAWING MAY NOT BE COPIED OR USED OR SHOWN TO PARTIES OUTSIDE YOUR ORGANIZATION WITHOUT THE PRIOR WRITTEN PERMISSION OF SATELLITE INDUSTRIES, INC.