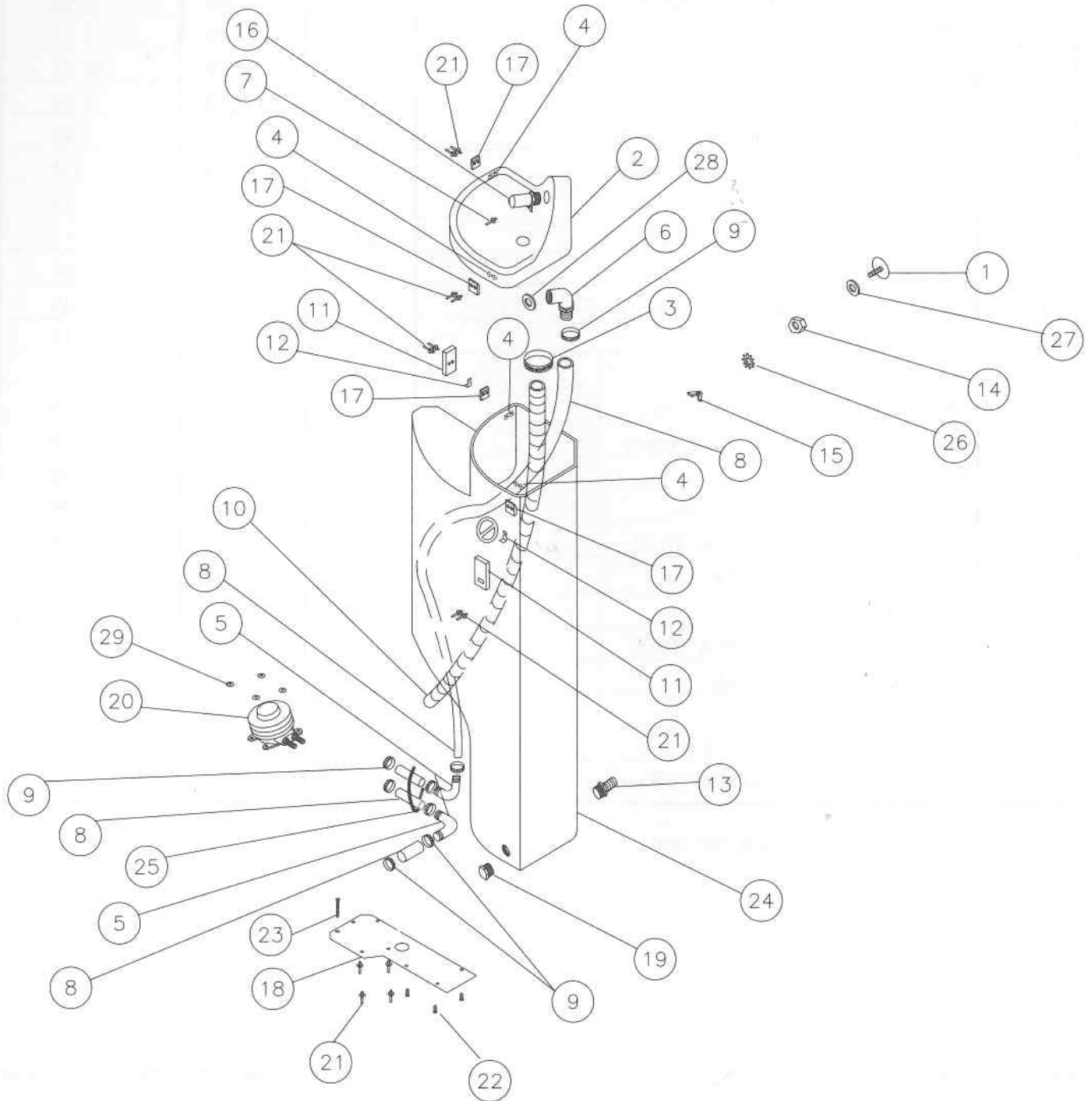


# SLIMMATE™ HAND WASH MAJOR ASSEMBLY



# SLIMMATE™ HAND WASH MAJOR ASSEMBLY PRE 1998 STYLE

FIG #	PART #	DESCRIPTION	QTY USED PER UNIT
1	13439	BOLT, 1/4"-20 X 1" ELEVATOR STNLS	1
2	14563	BOWL, SLIMMATE™ GREY	1
	15132	BOWL, SLIMMATE™ GRANITE	
3	12588	CLAMP, WORMDRIVE #12	1
*4	11384	WASHER, 1/8" RIVET STNLS	8
5	13840	ELBOW, 90° 1/2" INS X 1/2" INS	2
6	15571	ELBOW 90° 3/4" FPT X 1/2" IN NYL	1
*7	11027	RIVET, #66 ALUM	1
8	12043	HOSE, 1/2" ID (IN INCHES)	53
9	10280	CLAMP, WORMDRIVE #6	8
10	14780	HOSE, 7/8" LOW PRESSURE (IN INCHES)	48
11	14772	LATCH, DRAW HINGE	2
12	14778	LOCK, DRAW HINGE LATCH	2
13	14766	NIPPLE, 1/2" KING NYLON	1
14	10765	NUT, 1/4" NC	1
15	13440	NUT, 1/4"-20 WING TYPE A STNLS	1
16	14942	OUTLET, SLIMMATE™ SLOTTED	1
17	14773	PLATE, DRAW HINGE LATCH	4
18	14937	PLATE, PLASTIC SLIMMATE™ PUMP	1
19	14203	PLUG, 1/2" HEX HEAD PLASTIC PIPE	1
20	14484	PUMP, BABY FOOT MKII	1
*21	15144	RIVET, #410 ALUM	12
*22	13280	SCREW, #10-24 X 1/2" PH PN	3
*23	13860	SCREW, #14 X 1-1/2" W/WSH GOLD	1
24	14564	TANK, SLIMMATE™ GREY	1
	15133	TANK, SLIMMATE™ GRANITE	
25	11261	TIE, WIRE 6"	1
26	15340	WASHER, 1/4" STAR STNLS	1
27	11368	WASHER, 5/16" FLAT STNLS	1
28	15774	WASHER, 5/8" X 5/16" THK NEOPRENE	1
*29	11384	WASHER, 1/8" RIVET STNLS	4